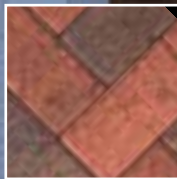


QUALITY  
BLOCK PAVING  
SYSTEMS  
FOR THE  
DISCERNING  
HOMEOWNER

RECTANGULAR



BEAMISH COBBLE



HEXAGONAL



COLLEGE SETTS



HADRIAN SETTS



**THOMAS  
ARMSTRONG**  
BLOCK PAVING PRODUCTS

All block paving manufactured by Thomas Armstrong  
contain a waterproofing admix to prevent water penetration

# ARMSTRONG ARMPAVE 50

## Rectangular Block Paving

Quality 50mm block paving from Thomas Armstrong can help you discover new inspirational ideas to create a wide spectrum of designs for your driveway and patio areas.

The Armpave 50 is available in eleven popular colours (Brindle, Red, Charcoal, Buff, Sunburst, Burnt Ochre, Harvest, Stone, Natural Grey, Marigold, Autumn Gold) which have been manufactured to British Standard requirements to offer you a distinctive and worthwhile investment for your home with low maintenance and a superb appearance.

**Permeable Use:** Armpave 50 paving can be manufactured for permeable paving solutions using a separate product specification. Please contact our sales office for details.



Autumn Gold



Sunburst



Buff



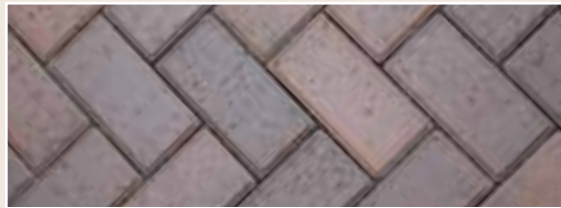
Red



Brindle



Charcoal



Shrink wrapped and Void packed

## TECHNICAL SPECIFICATION

**Size (nominal):** 200mm x 100mm x 50mm

**Colours:** Brindle, Red, Charcoal, Buff, Sunburst, Burnt Ochre, Harvest, Stone, Natural Grey, Marigold, Autumn Gold.

**No. of Blocks per Pack:** 520

**M<sup>2</sup> per Pack:** 10.4

**Weight per Pack:** 1080kg

**Paviors per m<sup>2</sup>:** 50

**Packaging:** Shrink wrapped and Void packed.

**Laying:** Use a minimum of three packs when laying at any time to maximise the variation of the natural colours.





Sunburst



Red Rectangular with Charcoal edging

# ARMSTRONG ARMPAVE 60

## Rectangular Block Paving

The standard rectangular block pavior (60mm thick) complies with British Standard requirements, which makes it ideally suited to all household applications.

Our close textured finish with chamfered edges gives an enhanced finished look. The Armpave 60 has been manufactured using high quality iron oxide pigments specifically designed to prolong and maintain the aesthetic look of your drive. The Armpave 60 is available in a range of eleven distinctive colours which offer a multitude of exciting colour combinations as well as the traditional single colour look.



Sunburst

## TECHNICAL SPECIFICATION

**Size (nominal):** 200mm x 100mm x 60mm

**Colours:** Brindle, Red, Burnt Ochre, Buff, Charcoal, Marigold, Stone, Harvest, Sunburst, Natural Grey, Autumn Gold.

**No. of Blocks per Pack:** 400

**M<sup>2</sup> per Pack:** 8

**Weight per Pack:** 1080kg

**Paviors per m<sup>2</sup>:** 50

**Packaging:** Shrink wrapped on wooden pallets.

**Laying:** Use a minimum of three packs when laying at any time to maximise the variation of the natural colours.

**Permeable Use:** Armpave 60 paving can be manufactured for permeable paving solutions using a separate product specification. Please contact our sales office for details.



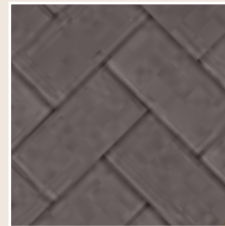
Brindle



Red



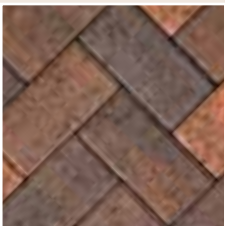
Harvest



Charcoal



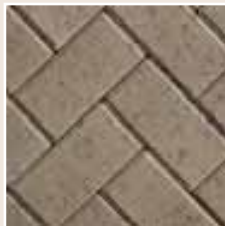
Marigold



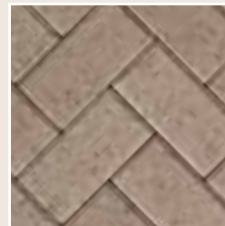
Burnt Ochre



Buff



Stone



Natural Grey



Autumn Gold



Brindle



Sunburst

# ARMSTRONG ARMPAVE 80

Rectangular Block Paving

The standard rectangular block pavior (80mm thick) complies with British Standard requirements, which makes it ideally suited to all commercial applications.

Our close textured finish with chamfered edges gives an enhanced finished look. The Armpave 80 has been manufactured using high quality iron oxide pigments specifically designed to prolong and maintain the aesthetic look of your drive. The Armpave 80 is available in a range of seven distinctive colours which offer a multitude of exciting colour combinations as well as the traditional single colour look.

## TECHNICAL SPECIFICATION

**Size (nominal):** 200mm x 100mm x 80mm

**Colours:** Brindle, Red, Burnt Ochre, Sunburst, Charcoal, Stone, Natural Grey.

**No. of Blocks per Pack:** 320

**M<sup>2</sup> per Pack:** 6.4

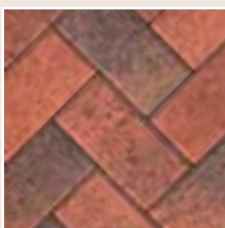
**Weight per Pack:** 1080kg

**Paviors per m<sup>2</sup>:** 50

**Packaging:** Void packed and banded.

**Laying:** Use a minimum of three packs when laying at any time to maximise the variation of the natural colours.

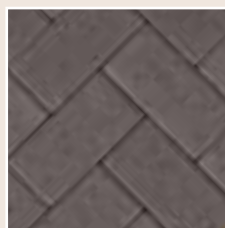
**Permeable Use:** Armpave 80 paving can be manufactured for permeable paving solutions using a separate product specification. Please contact our sales office for details.



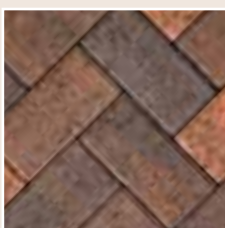
Brindle



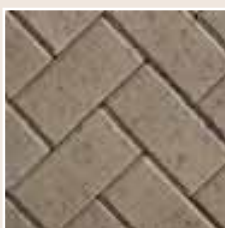
Red



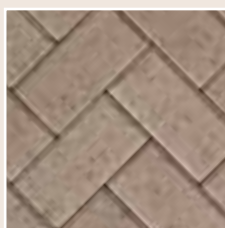
Charcoal



Burnt Ochre



Stone



Natural Grey



Brindle

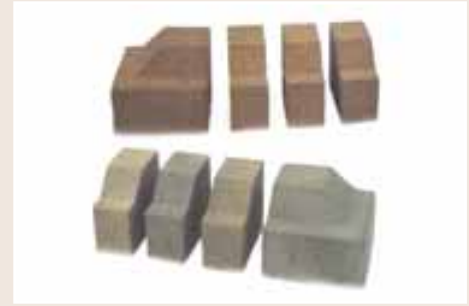
# ARMSTRONG KERB-SETTS

## Standard Edging Block

Colours available: Red, Charcoal, Brindle, Harvest, Stone, Burnt Ember, Burnt Ochre.

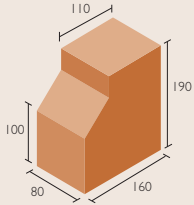


Kerb edging (low-rise position)

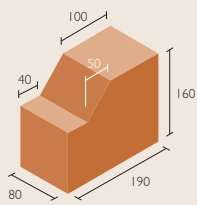


Stone, burnt ochre, burnt ember and harvest colours are also available.

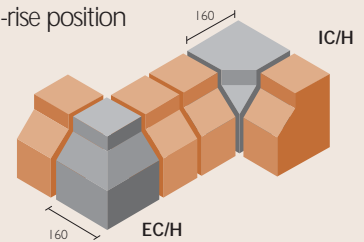
### High-rise position



### Low-rise position

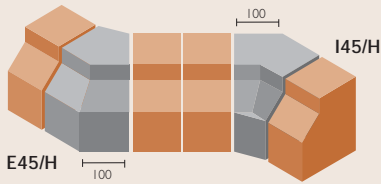


### In high-rise position

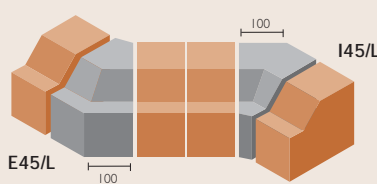


### 45° Angles

#### High-rise position

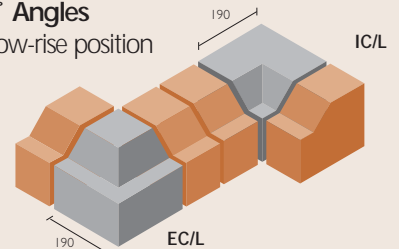


#### Low-rise position



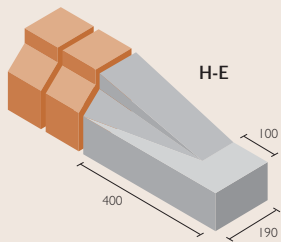
### 90° Angles

#### In low-rise position

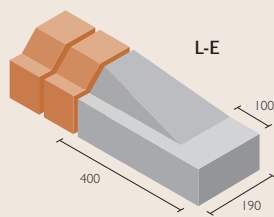


### End Blocks Supplied in handed pairs

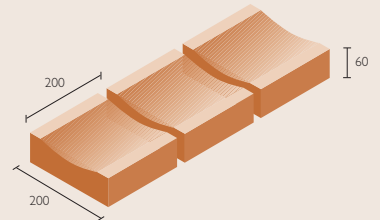
#### High-rise



#### Low-rise



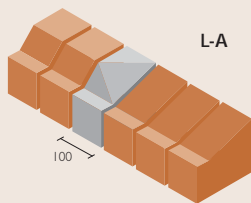
### Dished Channel Block



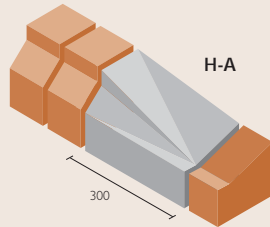
Colours available: Red, Brindle, Charcoal and Harvest.

### Transition Kerb Supplied in pairs

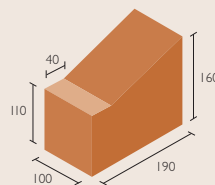
#### Low-rise to crossover type L-A



#### High-rise to crossover type H-A



### Crossover Block type A



## ARMSTRONG ACCESSORIES

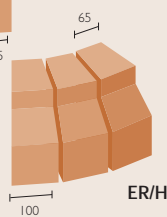
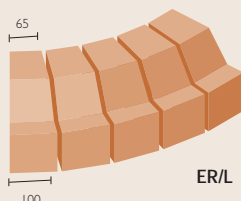
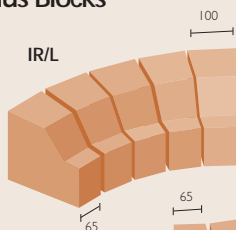
A range of kerb setts and fittings are available to complement the rectangular and hexagonal paving, including high and low rise kerbs, internal and external corners, radius blocks and channels.

Dry kiln sand available to order (25kg bag).

Special manhole cover and frame available.



### Radius Blocks



# BEAMISH COBBLE

## Block Paving

The Beamish Cobble typifies the re-creation of 'olde worlde' style period paving. This inherently good looking cobble is of a design of 'yesteryear' and at home with any period style property.

Its applications however are more varied and can look surprisingly at home with contemporary styles of housing. Its surface texture, shape and appearance make it ideal for driveways.

Beamish Cobbles can produce a truly authentic driveway for your perfect home. The genuine random cobble appearance is created using two widths of block, 170mm and 130mm, incorporating four varying lengths. Now available in seven distinct colours.





Harvest Cobble



Stone Cobble



Harvest



Stone



Brindle



Burnt Ember

## NEW COLOURS SUNBURST BURNT OCHRE SLATE

### TECHNICAL SPECIFICATION

Size (widths):	170mm and 130mm
No. of Blocks per Pack:	120 at 130mm 120 at 170mm
Total No. of Blocks per Pack:	240
Thickness of Block:	60mm
Weight per Pack:	1052kg
M <sup>2</sup> per Pack:	8

**Colours:** Harvest, Stone, Brindle, Burnt Ember; Sunburst, Burnt Ochre and Slate.  
**Packaging:** Shrink wrapped on wooden pallets or Void packed and Shrink wrapped.

**Laying:** Use a minimum of three packs when laying at any time to maximise the variation of the natural colours.

(Beamish Cobbles sold to the nearest layer)

**Permeable Use:** Beamish Cobbles can be manufactured for permeable paving solutions using a separate product specification.

Please contact our sales office for details.

**BRINDLE, STONE, HARVEST AND BURNT EMBER BOOT KERBS AND FITTINGS NOW AVAILABLE**



Brindle Cobble



Burnt Ember Cobble



Brindle Hexagonal



Red and Charcoal Hexagonal

## ARMSTRONG HEXAGONAL Block Paving

Flexibility of the hexagonal block and its applications, with the ability to create conceptual and beautiful patterns, is the key to its undoubtable appeal.

Available in four attractive colours, the hexagonal pavior will give you a lasting impression for both garden patios and driveways.

## TECHNICAL SPECIFICATION

**Size (nominal):** 225mm x 200mm x 60mm

**Colours:** Brindle, Red, Burnt Ochre, Charcoal

**No. of Blocks per Pack:** 140 (10 layers x 14)

**M<sup>2</sup> per Pack:** 5.0

**Weight per Pack:** 690kg

**Paviors per m<sup>2</sup>:** 28

**Packaging:** Shrink wrapped on wooden pallets.

**Laying:** Use a minimum of three packs when laying at any time to maximise the variation of the natural colours.



Red



Burnt Ochre



Brindle



Charcoal

# NEW PRODUCT

## COLLEGE SETTS

A unique product designed for Thomas Armstrong can transform your driveway with period style pavior effects. Manufactured in three colours Rustic, Granite, Heather, using three separate lengths of pavior to offer a pleasant tasteful range of distinctive designs.



GRANITE

### TECHNICAL SPECIFICATION

#### College Setts

**Size (nominal):** 240mm x 150mm x 60mm

**Size (nominal):** 150mm x 150mm x 60mm

**Size (nominal):** 130mm x 150mm x 60mm

**Colours:** Rustic, Granite, Heather

**No. of Blocks per Pack:** 240 (10 layers x 24)

**M<sup>2</sup> per Pack:** 6.3

**Weight per Pack:** 775kg

**Packaging:** Shrink wrapped on wooden pallets.

**Laying:** Use a minimum of three packs when laying at any time to maximise the variation of the natural colours.

**Permeable Use:** College setts can be used for permeable paving solutions.



HEATHER



RUSTIC



HEATHER



GRANITE



RUSTIC

# NEW PRODUCT

## HADRIAN SETTS

A new rumbled pavior designed for Coulthards (Concrete Products) Ltd can transform any driveway with a classic individual look. Each pavior is unique in its appearance and offers a tasteful authentic appeal which will enhance your driveway. Available in three colours, Granite, Heather and Rustic using three separate lengths of pavior:

### TECHNICAL SPECIFICATION

#### Hadrian Setts

Size (nominal): 240mm x 160mm x 50mm

Size (nominal): 180mm x 160mm x 50mm

Size (nominal): 140mm x 160mm x 50mm

Colours: Rustic, Granite, Heather

No. of Blocks per Pack: 325

M<sup>2</sup> per Pack: 10.19

Weight per Pack: 1255kg

Packaging: Shrink wrapped on a pallet.

Laying: Use a minimum of three packs when laying at any time to maximise colour variation.



RUSTIC



HEATHER



GRANITE

Coulthards Concrete Products (1980) Limited  
Blackdyke Industrial Estate,  
Silloth, Cumbria.  
CA5 4PD  
Tel: 01900 68114  
Fax: 01900 66136



# ARMSTRONG CONCRETE Common Bricks

Thomas Armstrong (Concrete Blocks) Ltd are now producing dense Concrete Common Bricks at its manufacturing facility at Silloth, Cumbria.

Manufactured in accordance with BS EN 771-3 they are suitable for use in conjunction with Thomas Armstrong dense concrete blocks for applications above and below dpc. Having a low drying shrinkage makes them ideally suited for accepting renders and finishes. Time and waste is reduced by avoiding block-cutting.

All Concrete Common Bricks are frogged and are manufactured using high-quality, locally sourced raw materials.

## APPLICATIONS

- External Cavity or Solid walls
- load-bearing and non-load-bearing walls
- Party Walls
- Flanking walls to Party walls
- Internal Partition Walls
- Foundation Walls below dpc
- Fire Resistant Walls

## GENERAL INFORMATION

Concrete Common Bricks are supplied void-packed and banded in staggered formation for added stability during transit.

	65mm	73mm
Number per Pack:	424	392
Approx Block Weight:	2.95 - 3.15kg	2.95 - 3.15kg
Approx Pack Weight:	1.28 tonnes	1.24 tonnes
Approx Pack Size:	860 x 860 x 990 mm (LxWxH)	

Notes:

1. Block and pack weight includes the additional weight due to the typical moisture content of the block.



## TECHNICAL PROPERTIES

Size:	215mm x 103mm x 65mm
Size:	215mm x 103mm x 73mm
Compressive Strength:	21.0 N/mm <sup>2</sup>
Dry Density (approximate):	2100 - 2200 kg/m <sup>3</sup>
Design Thermal Conductivity:	1.43 W/m.K
Fire Resistance category:	Class 1 as per BS 5628:3
Tolerance category:	D1
Freeze/Thaw Resistant:	Yes
Average Drying Shrinkage:	< 0.8 mm/m



Void packed and banded

# NEW

## 65mm SOLWAY CONCRETE BRICKS

### TECHNICAL SPECIFICATION Solway Bricks

Size: 215mm x 103mm x 65mm

Colours: Brindle, Red, Charcoal, Buff, Autumn Gold

No. of Bricks per Pack: 424

Weight per Pack: 1280kg

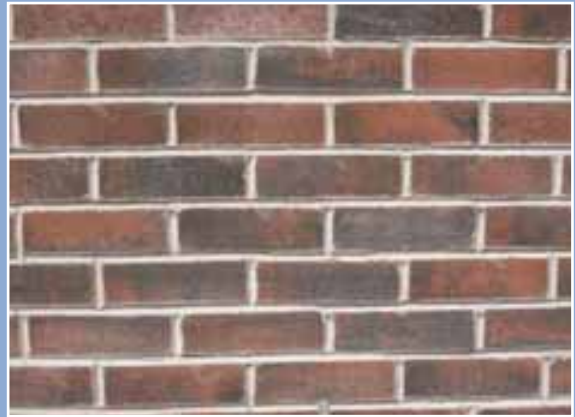
Packaging: Void packed and Shrink wrapped



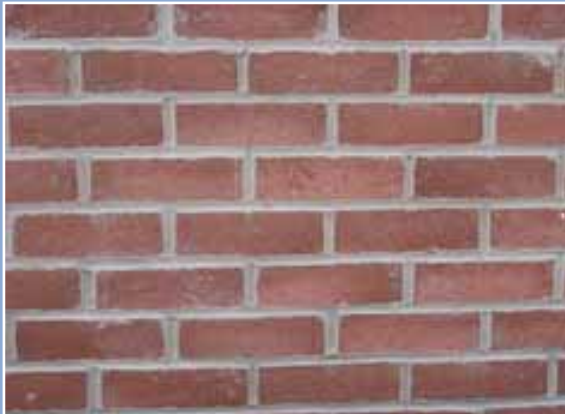
BUFF WALL



BUFF



BRINDLE



RED



CHARCOAL

[www.thomasarmstrong.co.uk](http://www.thomasarmstrong.co.uk)

email: [blocks@thomasarmstrong.co.uk](mailto:blocks@thomasarmstrong.co.uk)

Park Road, Blackhill, Consett, Co. Durham DH8 5SP  
Tel: 01207 505655 Fax: 01207 592345

Blackdyke, Silloth, Cumbria CA5 4PD  
Tel: 016973 31324 Fax: 016973 31418

Due to the use of natural aggregates in the manufacturing process, the colour of the finished products will be marginally varied in each production batch. Every effort has been made to achieve accurate colour representation within this brochure, however due to limitations of the printing process colours may vary slightly. It is recommended that you visit a local builders merchant depot if you require visual colour matching of our products.